

 **BOEING**
COMPONENT
MAINTENANCE MANUAL

TO: ALL HOLDERS OF THE HF COMM - CW JACK PANEL ASSEMBLY, M1317, COMPONENT
MAINTENANCE MANUAL 23-11-03

REVISION NO. 1 DATED JUL 01/01

HIGHLIGHTS

Pages which have been added or revised are outlined below together with the highlights of the revision. Remove and insert the affected pages as listed and enter Revision No. and date on the Record of Revision Sheet.

CHAPTER/SECTION

AND PAGE NO.

1003-1005,1007

DESCRIPTION OF CHANGE

Updated IPL per the latest engineering data.

23-11-03

HIGHLIGHTS

01.1

Page 1

Jul 01/01

HF COMM - CW JACK PANEL ASSEMBLY, M1317

PART NUMBER 233T4252-1

COMPONENT MAINTENANCE MANUAL
WITH
ILLUSTRATED PARTS LIST

23-11-03

TITLE PAGE

Page 1

Mar 01/01

01



REVISION RECORD

- Retain this record in front of manual. On receipt of revision, insert revised pages in the manual, and enter revision number, date inserted and initial.

REVISION NUMBER	REVISION DATE	DATE FILED	BY	REVISION NUMBER	REVISION DATE	DATE FILED	BY

23-11-03

REVISION RECORD

01

Page 1

Mar 01/01



TEMPORARY REVISION AND SERVICE BULLETIN RECORD

BOEING SERVICE BULLETIN	BOEING TEMPORARY REVISION	OTHER DIRECTIVE	DATE OF INCORPORATION INTO MANUAL

23-11-03

TR & SB RECORD

01

Page 1

Mar 01/01


BOEING
 COMPONENT
 MAINTENANCE MANUAL

PAGE	DATE	CODE	PAGE	DATE	CODE
23-11-03			ILLUSTRATED PARTS LIST 1008	BLANK	CONT.
TITLE PAGE					
1	MAR 01/01	01			
2	BLANK				
REVISION RECORD					
1	MAR 01/01	01			
2	BLANK				
TR & SB RECORD					
1	MAR 01/01	01			
2	BLANK				
LIST OF EFFECTIVE PAGES					
*1	JUL 01/01	01			
THRU LAST PAGE					
CONTENTS					
1	MAR 01/01	01			
2	BLANK				
INTRODUCTION					
1	MAR 01/01	01			
2	BLANK				
DESCRIPTION & OPERATION					
1	MAR 01/01	01			
2	MAR 01/01	01			
TESTING & TROUBLE SHOOTING					
101	MAR 01/01	01			
102	MAR 01/01	01			
ILLUSTRATED PARTS LIST					
1001	MAR 01/01	01			
1002	MAR 01/01	01			
*1003	JUL 01/01	01.1			
*1004	JUL 01/01	01.1			
*1005	JUL 01/01	01.1			
*1006	JUL 01/01	01.1			
*1007	JUL 01/01	01.1			

* = REVISED, ADDED OR DELETED

23-11-03

EFFECTIVE PAGES
 LAST PAGE Page 1
 01 Jul 01/01

TABLE OF CONTENTS

<u>Paragraph Title</u>	<u>Page</u>
Description and Operation	1
Testing and Trouble Shooting.	101
Disassembly*[1]
Cleaning.*[1]
Check*[1]
Repair.*[1]
Assembly.*[1]
Fits and Clearances (not applicable)	
Special Tools*[2]
Illustrated Parts List.	1001

*[1] Use applicable procedures in S0PM 20-11-04 and standard industry practices.

*[2] Special instructions not required.

23-11-03

CONTENTS

01

Page 1

Mar 01/01



INTRODUCTION

The instructions in this manual provide the information necessary to perform maintenance functions including test, fault isolation, and replacement of defective components.

This manual is divided into separate sections:

- | | |
|--|------------------------------|
| 1. Title Page | 4. List of Effective Pages |
| 2. Record of Revisions | 5. Table of Contents |
| 3. Temporary Revision &
Service Bulletin Record | 6. Introduction |
| | 7. Procedures & IPL Sections |

Refer to the Table of Contents for the page location of applicable sections.

An explanation of the use of the Illustrated Parts List is provided in the Introduction to that section.

All weights and measurements used in the manual are in English units, unless otherwise stated. When metric equivalents are given they will be in parentheses following the English units.

Design changes, optional parts, configuration differences and Service Bulletin modifications create alternate part numbers. These are identified in the Illustrated Parts List (IPL) by adding an alphabetical character to the basic item number. The resulting item number is called an alpha-variant. Throughout the manual, IPL basic item number references also apply to alpha-variants unless otherwise indicated.

Verification:

Testing/TS

23-11-03

INTRODUCTION

01

Page 1

Mar 01/01



HF COMM - CW AND JACK ASSEMBLY PANEL M1317

DESCRIPTION AND OPERATION

1. Description

- A. The HF Comm - CW and Jack Panel Assembly M1317 contain two connectors and a wire bundle. See Fig. 1 for component location.

2. Operation

- A. The HF Comm - CW and Jack Panel Assembly M1317 provide an interface so that the operator may hook up to the HF Radio.

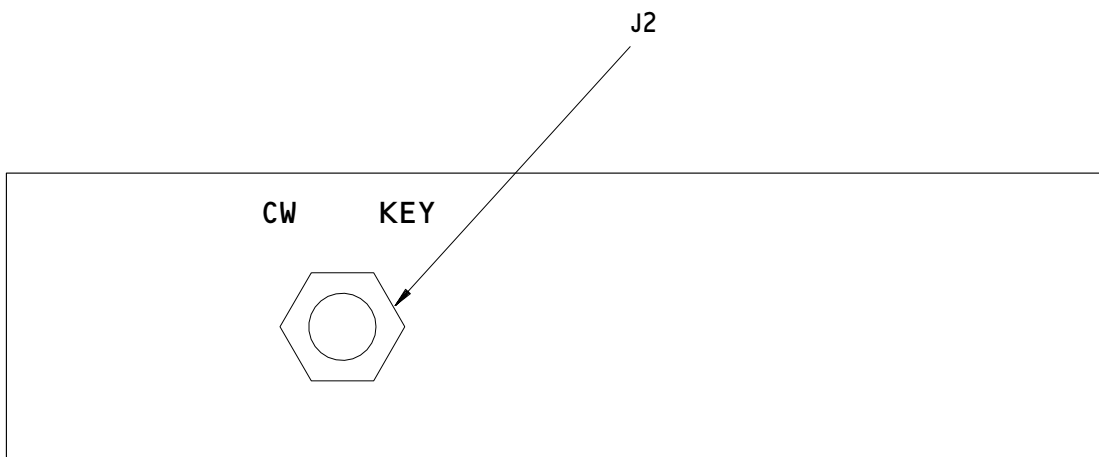
23-11-03

DESCRIPTION & OPERATION

01

Page 1

Mar 01/01



233T4252-1
HF Comm - CW Jack Panel Assembly Component Location
Figure 1

23-11-03

DESCRIPTION & OPERATION
01 Page 2
Mar 01/01

TESTING AND TROUBLE SHOOTING

 1. Test Equipment

- A. Multimeter: Simpson 260 or equivalent
- B. Test Connectors: Boeing Test Breakout Box A33003-2 may be used along with test cables listed below:

TEST CONNECTOR
A33003 TEST CABLE

BACC45FT12-12S6 (connects with J1) A33003-167

 2. Functional Test

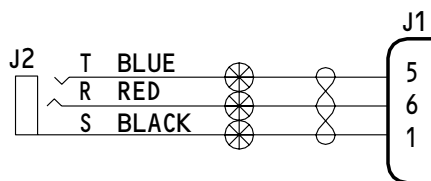
- A. Connect Test Connectors to Panel Assembly.
- B. Do test steps as given in Fig. 101. See Fig. 102 for Wiring Diagram.
- C. Remove Test Connectors from Panel Assembly.

NOTE: CON means less than 3 OHMS
 OPEN means more than 900 KOHMS

TEST STEP	PROCEDURE	EXPECTED RESULT	COMPONENT TESTED
1	Measure Continuity between: J1-5 to J2-T (tip) J1-5 to J2-R (ring) J1-5 to J2-S (Sleeve)	CON OPEN OPEN	Wiring Wiring Wiring
2	Measure Continuity between: J1-6 to J2-T (tip) J1-6 to J2-R (ring) J1-6 to J2-S (Sleeve)	OPEN CON OPEN	Wiring Wiring Wiring
3	Measure Continuity between: J1-1 to J2-T (tip) J1-1 to J2-R (ring) J1-1 to J2-S (Sleeve)	OPEN OPEN CON	Wiring Wiring Wiring

233T4252-1 Functional Test
 Table 101

23-11-03



233T4252-1
 HF Comm - CW Jack Panel Assembly Schematic Diagram
 Figure 101

23-11-03

ILLUSTRATED PARTS LIST

1. This section lists and illustrates replaceable or repairable component parts. The Illustrated Parts Catalog contains a complete explanation of the Boeing part numbering system.

2. Indentures show parts relationships as follows:

Assembly

Detail Parts for Assembly

Subassembly

Attaching Parts for Subassembly

Detail Parts for Subassembly

Detail Installation Parts (Included only if installation parts may be returned to shop as part of assembly)

3. One use code letter (A, B, C, etc.) is assigned in the EFF CODE column for each variation of top assembly. All listed parts are used on all top assemblies except when limitations are shown by use code letter opposite individual part entries.

4. Letter suffixes (alpha-variants) are added to item numbers for optional parts, Service Bulletin modification parts, configuration differences (Except left- and right-hand parts), product improvement parts, and parts added between two sequential item numbers. The alpha-variant is not shown on illustrations when appearance and location of all variants of the part is the same.

5. Service Bulletin modifications are shown by the notations PRE SB XXXX and POST SB XXXX.

A. When a new top assembly part number is assigned by Service Bulletin, the notations appear at the top assembly level only. The configuration differences at detail part level are then shown by use code letter.

B. When the top assembly part number is not changed by the Service Bulletin, the notations appear at the detail part level.

6. Parts Interchangeability

Optional
(OPT)

The parts are optional to and interchangeable with other parts having the same item number.

Supersedes, Superseded By
(SUPSDS, SUPSD BY)

The part supersedes and is not interchangeable with the original part.

Replaces, Replaced By
(REPLS, REPLD BY)

The part replaces and is interchangeable with, or is an alternate to, the original part.

23-11-03

ILLUSTRATED PARTS LIST

01 Page 1001

Mar 01/01

7. The MOD level codes in the nomenclature column, such as MOD A and MOD B, identify interchangeable top assemblies which have the same part number but which have differences at the subassembly or component levels. The IPL identifies each MOD level of a top assembly with a different item number and use code. The nameplate label identifies the MOD level of each assembly in the MOD LEVEL block.
8. Use substitute parts only as specified in the document D906-10182, Electrical/Electronic/Electromechanical and Mechanical Parts Substitution.

23-11-03ILLUSTRATED PARTS LIST
01 Page 1002
Mar 01/01

**BOEING**
COMPONENT
MAINTENANCE MANUALVENDORS

08524 DEUTSCH FASTENER CORP SEE CODE V97928

15653 FAIRCHILD FASTENERS KAYNAR PRODUCTS DIV
800 S STATE COLLEGE BLVD
FULLERTON, CALIFORNIA 92831-3001
FORMERLY VK6405 MICRODOT AEROSP LTD; FORMERLY KAYNAR TECH
KAYNAR DIV

60119 MONADNOCK CO THE
18301 ARENTH AVENUE PO BOX 1222
CITY OF INDUSTRY, CALIFORNIA 91749
FORMERLY UNITED CARR FASTENER CORP VB0051 VB0056 VB0076
FORMERLY TRW ELECTRONIC COMPONENTS CINCH-MONADNOCK DIV
FORMERLY CINCH-MONADNOCK DIV OF TRW INC V76530

72962 HARVARD INDUSTRIES INC
3 WERNER WAY SUITE 210
LEBANON, NEW JERSEY 08833
FORMERLY AMERACE CORP ESNA DIV
FORMERLY ELASTIC STOP NUT IN UNION, NJ

82389 SWITCHCRAFT, INC SUB OF RAYTHEON CO
5555 NORTH ELSTON AVENUE
CHICAGO, ILLINOIS 60630-1314

23-11-03ILLUSTRATED PARTS LIST
01.1 Page 1003
Jul 01/01

REFERENCE DESIGNATOR INDEX (SEE SCHEMATIC DIAGRAM)		
REFERENCE DESIGNATOR	PART NUMBER	FIG-ITEM
J1 J2	BACC45FN12-12P6 2J1659	1-55 5

23-11-03


BOEING
 COMPONENT
 MAINTENANCE MANUAL

PART NUMBER	AIRLINE PART NO.	FIG.	ITEM	TTL REQ
BACC45FN12-12P6		1	55	1
BACN10NW1		1	50	2
BACP10U0150N		1	40	1
BACR15BA3A		1	15	4
BACS21DD1B		1	35	2
BACW10CR7		1	10	1
BAC27TFDE0224		1	85	1
DBMB1400-6A1		1	35	2
K19798-04		1	50	2
MS35338-41		1	65	3
NAS1801-04-5		1	45	2
NAS1801-06-5		1	60	3
NAS514P632-5		1	25	3
RMA4812-160-40		1	50	2
2J1659		1	5	1
233T4252-1		1	1A	RF
233T4252-2		1	30	1
233T4252-3		1	80	1
233T6200-107		1	75	1
293162		1	50	2
69B46200-5		1	70	3
69B46247-4		1	20	1

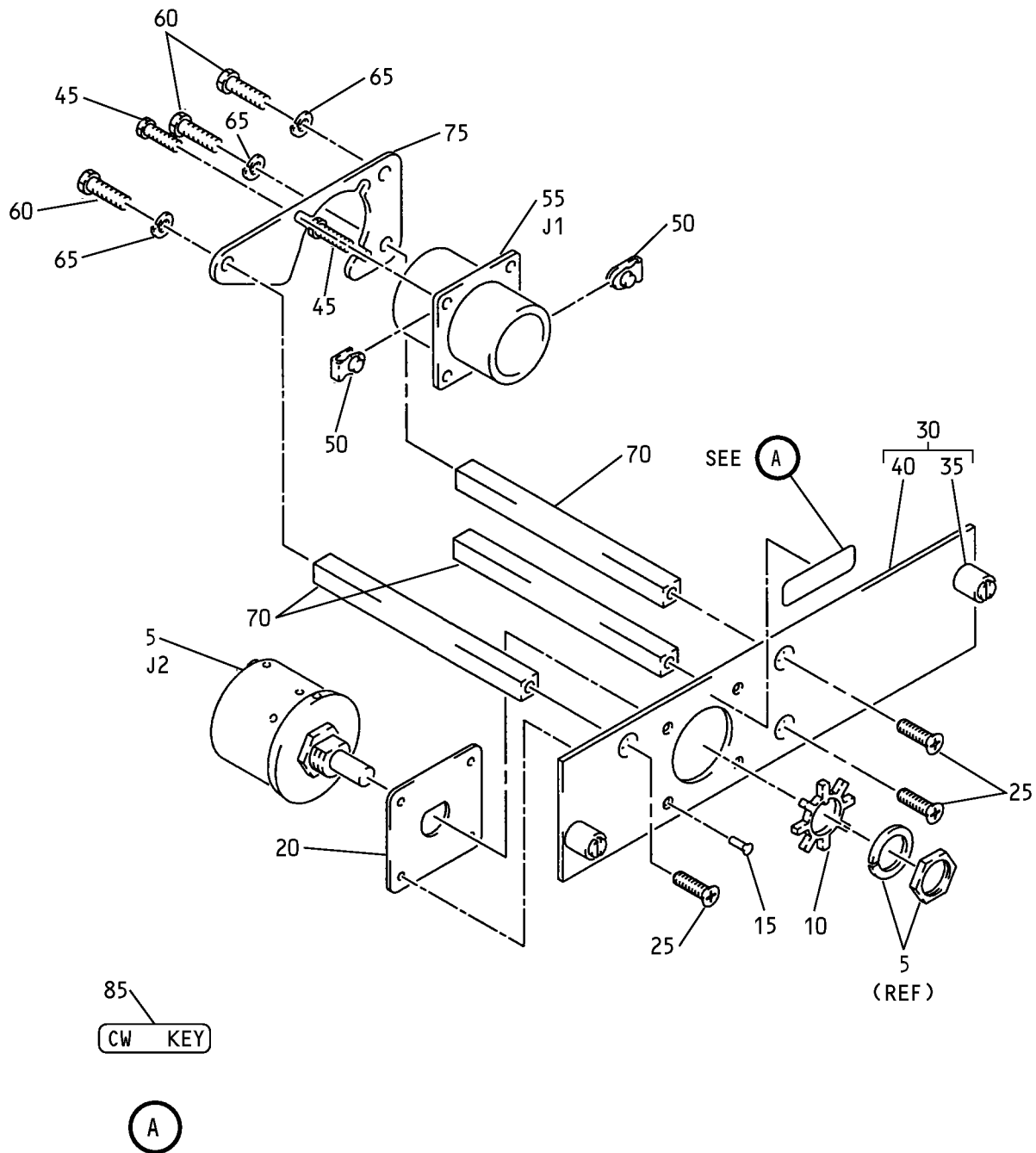
23-11-03

ILLUSTRATED PARTS LIST

01.1

Page 1005

Jul 01/01



HF Comm. - CW Jack Panel Assembly
 Figure 1

23-11-03

ILLUSTRATED PARTS LIST
 01.1 Page 1006
 Jul 01/01


BOEING
 COMPONENT
 MAINTENANCE MANUAL

FIG. & ITEM	PART NO.	AIRLINE PART NUMBER	NOMENCLATURE 1234567	EFF CODE	QTY PER ASSY
01- -1A	233T4252-1		PANEL ASSY-HF COMM-CW & JACK, (M1313)		RF
5	2J1659		.CONNECTOR-JACK (V82389) (J2)		1
10	BACW10CR7		.WASHER		1
15	BACR15BA3A		.RIVET- (SIZE DETERMINE ON INST)		4
20	69B46247-4		.PLATE-INSULATOR		1
25	NAS514P632-5		.SCREW		3
30	233T4252-2		.BASEPLATE ASSY		1
35	DBMB1400-6A1		..STUD ASSY- (V08524) (SPEC BACS21DD1B)		2
40	BACP10U0150N		..PANEL		1
45	NAS1801-04-5		.SCREW		2
50	K19798-04		.NUT- (V15653) (SPEC BACN10NW1) (OPT RMA4812-160-40 (V72962)) (OPT 293162 (V60119))		2
55	BACC45FN12-12P6		.CONNECTOR- (J1)		1
60	NAS1801-06-5		.SCREW		3
65	MS35338-41		.WASHER		3
70	69B46200-5		.STANDOFF		3
75	233T6200-107		.BRACKET-SPRT		1
-80	233T4252-3		.WIRE BUNDLE ASSY		1
85	BAC27TFDE0224		.DECAL-VINYL BOEING LETTER HISTORY		1

- Item Not Illustrated

23-11-03

ILLUSTRATED PARTS LIST
 01.1 Page 1007
 Jul 01/01